



DATA SHEET

Friction Roller Transducer

General

A spring loaded steel roller, running on any suitable surface, actuates the sensor which generates signals that correspond to the distance moved. These signals are counted in the display cabinet and shown in numeric form.

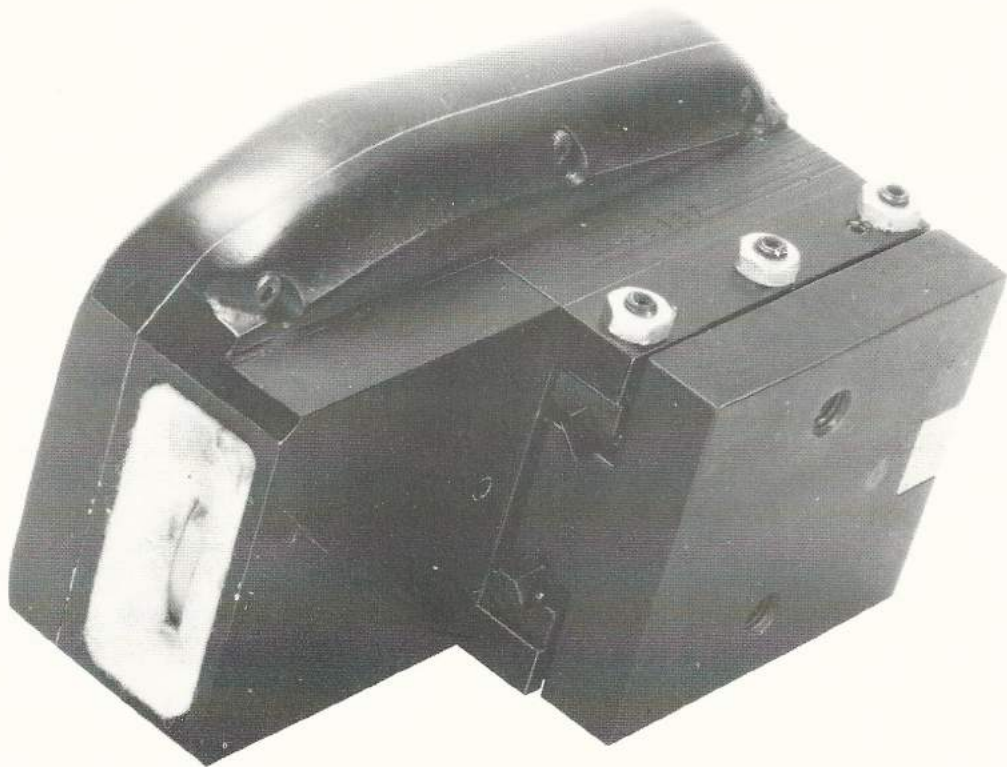
Installation

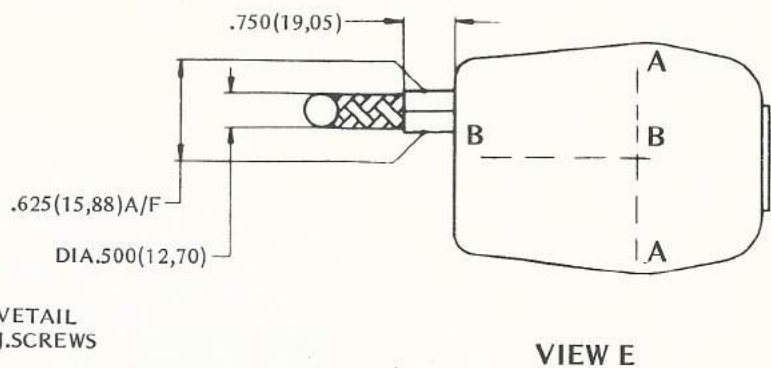
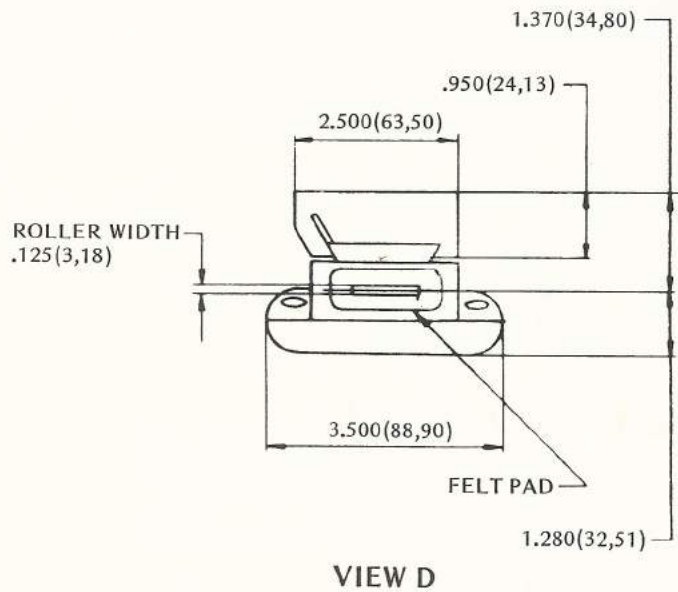
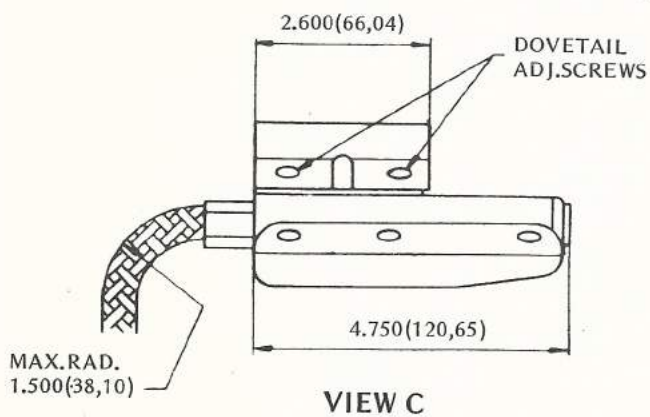
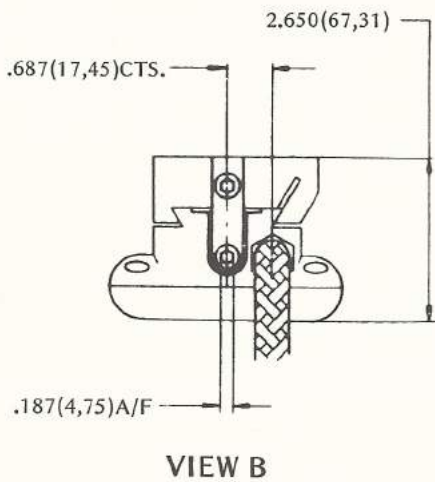
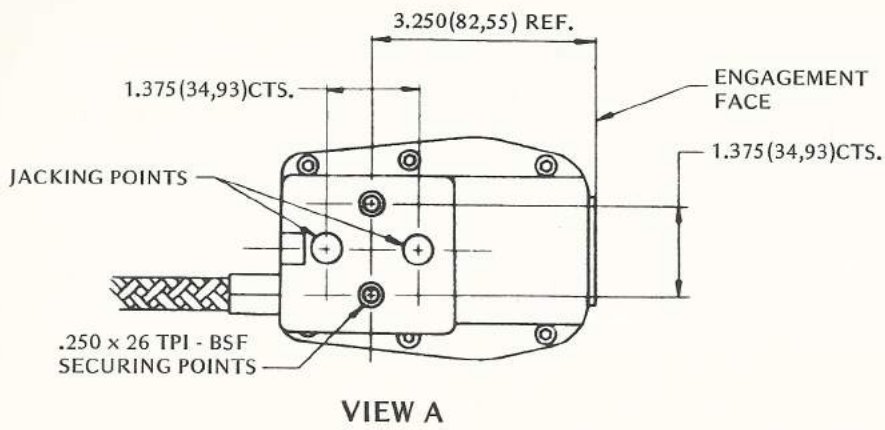
The transducer head is mounted in such a way as to provide adjustments for calibration and spring

loading. It has all solid state electronics and is therefore resistant to shock. The head is sealed against the ingress of dirt, oil, etc. It is easily installed and calibrated on any axis, often with a simple right angle bracket.

Accuracy
0.0005 ins. over 6 ins.

Weight
2 lb. 0.9 Kg.





NEWALL
ELECTRONICS

Control systems for the machine tool and other industries

Ivatt Way, Westwood, Peterborough PE3 7PF
Telephone (Peterborough) 0733 262581

Printed in England.